



BILF

HELMET MANUAL

BILT

HOW TO PROPERLY FIT A MOTORCYCLE HELMET

Motorcycle helmets are an important piece of safety equipment that could help protect and/or possibly save a rider's life. A properly fitted helmet is critical to the safety of every rider and passenger.

You are responsible for your own safety! No helmet can protect the wearer against all possible or foreseeable impacts.

WARNING

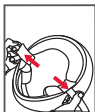
Wearing an improperly fitting helmet could increase your risk of serious injury or death in an accident. Follow the instructions below for checking the fit of your motorcycle helmet. If you need help, visit your local BILT retailer or go to www.ridecomoto.com for detailed sizing and fit instructions. Motorcycle helmets are intended for motorcycle, ATV and UTV use only.

7-Day No-Hassle Helmet Exchange - If your new helmet doesn't fit correctly; you may exchange it for any other size, model and/or brand of helmet. Within 7 days of receipt, take it (in original condition and packaging, with all components) to any Cycle Gear Store or contact customer service at CycleGear.com. If you choose to mail it, call us and we will assist you an electronic return label.



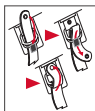
Step 1: Select and Helmet

Use your existing helmet size(or estimate) as a guage to start the fitting process. The helmets size label is sewn onto the helmets interior comfort liner.



Step 2: Try on the helmet

Hole the helmet in front of you. The helmet bottom should face you with the front pointing down. Hold the helmet retention system straps and pull outward slightly. This gives your ears a bit more clearance when pulling on a full or open face helmet. Pull the helmet onto your head. Check your field of vision. Your vision should not be obstructed or blocked when looking up, down, left or right.



Step 3: Securely fasten the helmet

Fasten the retention system as tightly as possible under your jaw without causing pain. There must be no slack in the retention system and it must be snug up against your jaw. If the retention system is not tight, your helmet may become dislodged or knocked off in an accident. If your retention system has a snap on the strap, **DO NOT RELY** on it to secure the helmet. The snap is provided only to prevent the strap end from flapping in the air. Fasten teh retention as shown on the left

HOW TO PROPERLY FIT A MOTORCYCLE HELMET (CONT.)



Step 4: Ensure a snug fit.

With the tightened retention system secure under your jaw, take hold of the helmet with a hand on each side. Without moving your head, try to move the helmet up and down and side to side. The helmet should fit as snug as possible around the crown of your head and settle onto the top of your head. If there is a gap between the top of your head and the inside ceiling of the helmet, the helmet is too small. If you can move the helmet around easily, it is too big. When moving a proper fitting full or open face helmet, your face, cheek and scalp skin should move with the helmet liner. When moving a proper fitting half helmet, your scalp skin should move with the helmet liner.



Step 5: Check for adequate retention.

With the tightened retention system secure under your jaw, take hold of the helmet with your hands on the back of the helmet. Try pushing the helmet off by rotating it forward. Then put your hands on the front of the helmet and try pushing the helmet off by rotating it toward the rear. If the helmet is close to coming off in either direction, covers your eyes or touches your nose, try a smaller size.

****Remove Visor Protective Film:



HELMET CARE AND MAINTENANCE

! WARNING

Improper care and maintenance can damage your helmet and could increase your risk of serious injury or death in an accident.

Only clean with mild soap and water or a cleaner designed for motorcycle helmets.

Never use petrochemicals, glass cleaners, ammonia, bleach, gasoline paint thinner, benzene, acetone, bug repellent, acid-based, alkali-base or any other harsh cleaner or solvent. Keep helmet away from fumes of such products. Use of those or similar products and their fumes can cause damage to the helmet's shell, face shield, interior comfort liner, protective EPS foam and other components. This damage may not be visible. Read instructions below for more information on how to clean the different helmet components.

Store your helmet in a cool dry place. Keep away from heat in excess of 120(°)F and do not set near hot surfaces. Keep away from pets and animals.

Never Modify your helmet in any way. This includes, but is not limited to:

- Drilling holes.
- Cutting the shell, liner or strap.
- Modifying the retention system including adding a chin cup or quick release mechanism.
- Removing parts.
- Painting.
- Attaching accessories that are not made specifically for the make and model of helmet.
- Cutting or removing rubber trim.
- Removal or modification of the EPS foam.

Make sure you can see clearly through your face shield before riding.

HELMET CLEANING INSTRUCTIONS

Face Shield

Clean the face shield on a regular basis. It is best and easiest to remove bugs and dirt immediately after use. Remove the shield from the helmet before cleaning. Use a cleaner designed for use on helmet face shields or use warm water, non-abrasive hand or dish soap and a clean soft cloth. Use only light pressure to remove dirt. Blot dry. Do not use paper products or paper towels to clean or dry the face shield. Before reinstalling the face shield inspect the shield base plates. Clean the base plates and snug the screws as needed.

Interior Comfort Liner

Cleaning the helmet's interior liner with motorcycle helmet cleaner can help reduce odor caused by bacteria and mildew as well as keep your helmet feeling and smelling fresh.

Non-Removable Liner: Be very careful when cleaning non-removable helmet liners. Improper cleaning may damage the adhesives that hold the liner in place. It is best to use a cleaner designed for washing motorcycle helmet liners. Gently hand-wash the liner. Thoroughly rinse any cleaning agent. Blot with a clean cloth or towel to absorb as much water as possible and then air dry.

Removable Liner: Remove the liner from the helmet. Use a cleaner designed for washing motorcycle helmet liners or use mild hair shampoo. Gently hand-wash the liner. Thoroughly rinse any cleaning agent. Blot with a clean cloth or towel to absorb as much water as possible and then air dry. Do not put the liner in the dryer.

Interior Safety EPS Foam: Use extreme care cleaning this impact absorbing part of the helmet. The EPS foam can be easily damaged. Press very softly and use only warm water and a damp cloth. Blot dry with a soft cloth or towel. Never apply heat or solvents.

Exterior (Outer) Shell

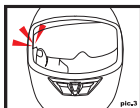
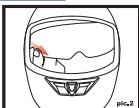
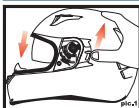
Gloss Finish: Use a cleaner designed for motorcycle helmet shells or use warm water, non-abrasive hand or dish soap and a clean soft cloth. Use only light pressure to remove dirt. Thoroughly rinse any cleaning agent and blot dry. Do not use paper products to clean or dry, as they will scratch it.

Non-Gloss Finish/Matte Finish: Use warm water, non-abrasive hand or dish soap and a clean soft cloth. Use only light pressure to remove dirt. Thoroughly rinse any cleaning agent and blot dry. Do not use paper products to clean or dry, as they will scratch it. Excessive pressure, using other cleaning agents, waxes or polish may alter the finish to look wet or glossy.

Vent Cleaning: Dirt and debris can find its way into the venting of the helmet. Remove the interior liner if possible. Use a compressed air can typically used to clean computer keyboards. Do not use high-pressure air. The compressed air should blow the dirt and debris out of the vent.

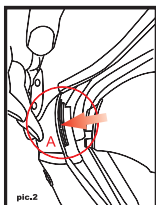
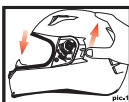
DROP DOWN VISOR INSTALL/UNINSTALL

HOW TO UNINSTALL



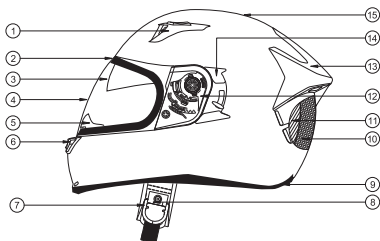
1. Lift the outer shield up and bring down the inner visor.(pic.1)
2. Hold the helmet tight and pull the inner visor away from the helmet.(pic.2)
3. Once a "click" is audible, the inner visor is released from the helmet.(pic.3)

HOW TO INSTALL



1. Lift the outer visor up.
 2. Slide the inner visor into the holder(see A of Pic.2) on both sides.
- *Slide the inner visor into the holder until a "click" is audible.
- * The incorrect installation of the inner visor may adversely affect its performance .

GENERAL OVERVIEW:



- | | | |
|--------------------|--------------------------|---------------------|
| ① TOP FRONT VENT | ⑥ MOUTH VENT | ⑪ COMFORT LINER |
| ② EYEPORT GASKET | ⑦ DOUBLE "D" RING | ⑫ RATCHET |
| ③ INNER VISOR | ⑧ CHIN STRAP | ⑬ REAR VENT |
| ④ FACE SHIELD | ⑨ RUBBER COMPONENTS | ⑭ INNER VISOR COVER |
| ⑤ BREATH DEFLECTOR | ⑩ IMPACT ABSORBENT LINER | ⑮ OUTER SHELL |

BILT

www.ridecomoto.com

INFO: 1-800-292-5343

CUSTOMER SERVICE: cs@cyclegear.com

HOURS:

Monday - Friday: 10am - 8pm Eastern Time

Saturday: 10am - 7pm Eastern Time

Sunday : Closed

© 2019 CycleGear.com All Rights Reserved